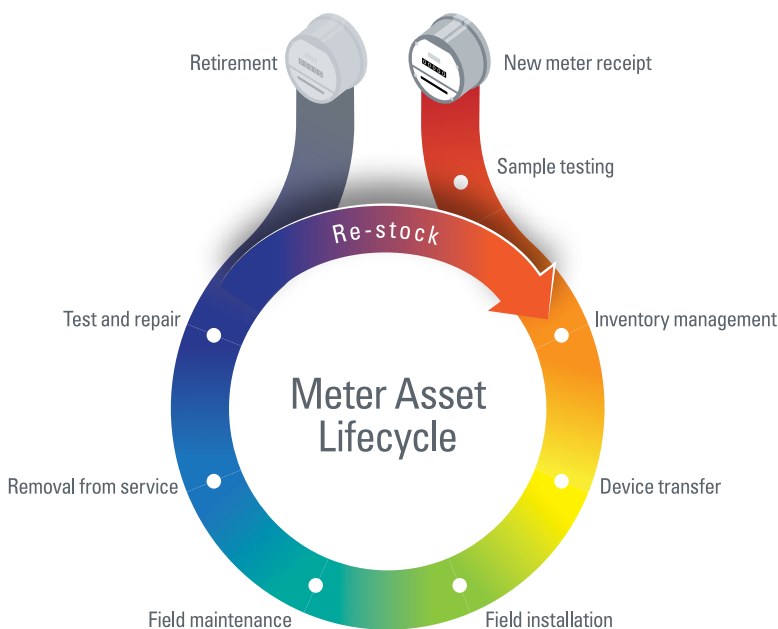


Aclara Software™ AMI Device Management

FOR MIDSIZED UTILITIES

Electric, water, and gas utilities effectively track meter assets from purchase to retirement using software specifically designed to do the job.

Aclara Software AMI Device Management for Midsized Utilities is a rapidly deployed, out-of-the-box solution for managing metering devices. It handles tasks that general-purpose asset-management systems cannot, including testing meters and communication modules as well as managing device configurations.



AMI Device Management for Midsized Utilities delivers

Total asset visibility

Tracks meters in the warehouse as well as those connected to premises

Efficient AMI operations

Supports device testing

Configuration management

Stores device data in a central, controlled repository and maintains device configuration integrity.

Scalability

Expands as business requirements grow

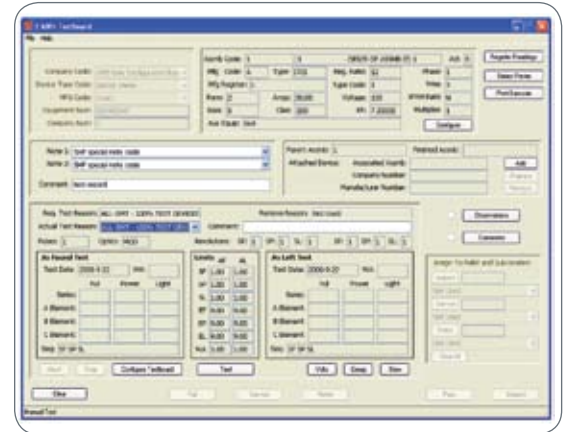
Interoperability

Connects to business systems via Service-Oriented Architecture

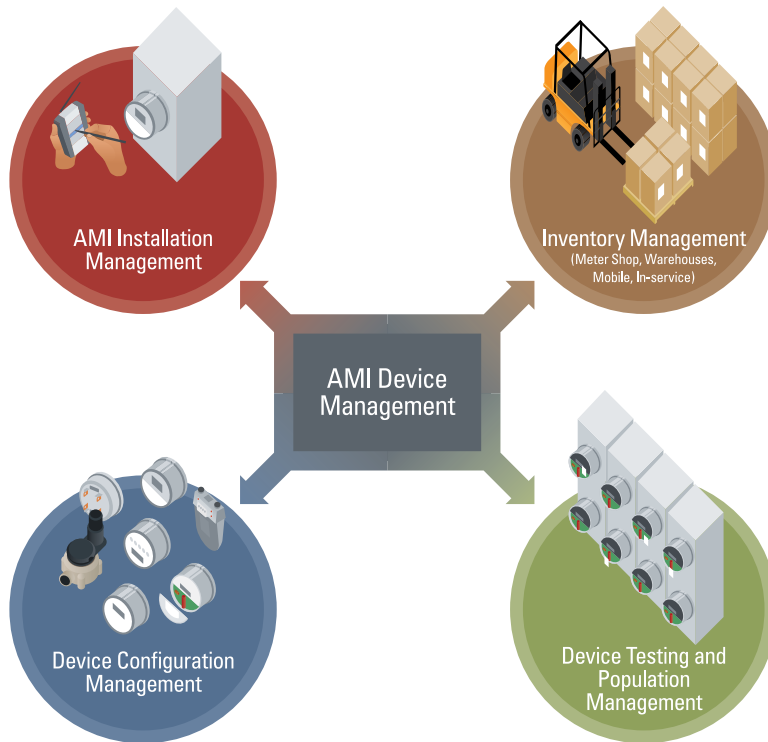
Superior features add value

AMI Device Management for Midsized Utilities allows utilities to:

- Know where exactly where assets are, and who has responsibility for them.
- Manage meter testing efficiently by enforcing test requirements and automatically collecting data from test equipment.
- Avoid configuration mistakes by validating changes made in the field against specific characteristics and capabilities of a device.
- Seamlessly interface with other business systems to support AMI operations.



ADM kWh Test Board Screen
Used in conjunction with kWh test boards to record electric-meter test results



The AMI Device Management for Midsized Utilities solution provides an easy-to-use interface that includes process wizards and built-in validations. The program also offers read-only web access to device information in the database.

Designed to grow with changing business needs

AMI Device Management for Midsized Utilities offers optional, add-on functions that ensure systems can grow as business requirements evolve:

- Track inventory in multiple storage sites such as district offices and remote warehouses using personal digital assistants.
- Manage in-service performance testing and field maintenance programs.
- Test additional device types such as current and voltage transformers.
- Support multiple companies and multiple device types, allowing separate tracking as well as separate business logic and handling procedures.
- Tests and tracks EPE items (rubber goods) used by field personnel who are exposed to potential high voltage electrical hazards.