



Is Your Asset System Ready for Advanced Metering?

Introducing Aclara Software's AMI Device Management Solution - Enterprise-Class Meter Records and Device Tracking

Correct and reliable metering device asset data is necessary to support AMI deployments and various other business processes in utility operations. Aclara Software's AMI Device Management solution (formerly AMS2000®) is a comprehensive, fully integrated software solution designed to serve as the system of record for all AMI device data, while providing cradle-to-grave tracking of meters and associated devices.

The deployment of Aclara's AMI Device Management solution provides you with the following benefits:

1 Total Asset Visibility

Most recently, utilities have had to adhere to tighter controls brought about by Sarbanes Oxley requirements, and therefore, can't afford to guess the accuracy of their inventory anymore. Aclara Software's (formerly Nexus Energy Software) AMI Device Management solution will help you get and maintain control of your metering and related assets from purchase through disposal. Total Asset Visibility means you'll always know exactly where your assets are, what they are worth, what your status is, and who has responsibility for them.

Knowledge about the condition, location and history of meter-related equipment is crucial to the ability to plan new investments and manage resources. Aclara's AMI Device Management solution puts this critical asset information at your finger tips so you can make sound business decisions.

Meter and device inventory levels should be managed efficiently so that you do not incur unnecessary costs to keep more devices in inventory. Aclara's AMI Device Management solution allows you to manage your inventory levels to achieve a high inventory turnover ratio, without suffering stock outages.

2 Efficient and Timely AMI Deployments

AMI deployment initiatives create the need for utilities to purchase, test, track, and install large volumes of meters and associated network devices. In addition, with AMI rollouts, a meter isn't just a meter any more – all components of a smart meter and AMI network must be tracked across the enterprise. It is therefore essential to have a robust asset management system in place prior to an AMI rollout. Beyond inventory tracking and device population management, Aclara's AMI Device Management solution is a field-proven, best-of-breed software product in the industry that enables you to manage large volumes of data from meter testing and meter changes in an efficient and timely manner. It enforces test requirements as specified by your business practices and supports automated test data collection using a variety of test equipment.

3 Improved Revenue Protection

The correct configuration and programming of metering devices is instrumental in improving accuracy of meter reads. Metering configuration mistakes usually lead to billing errors which can be very costly for a utility. Everyone is aware of at least one or two billing horror stories resulting from metering configuration inaccuracies that have led to high profile billing errors and loss of revenue to utilities.

System Features

Inventory Tracking

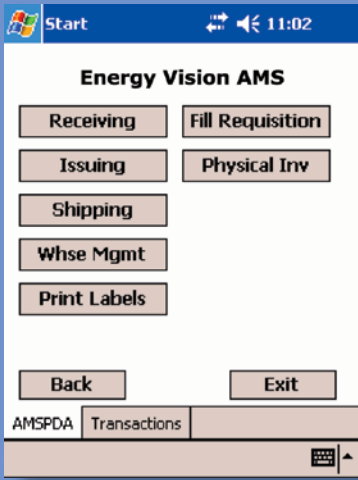
- New Materials Import
- Warehouse Management
- Material Requisition and Fulfillment
- Material Transfer
- Asset Accounting Integration

Device Testing

- Gas Device Testing
- Electric Device Testing
- General Device Inspection
- Service, Repair and Calibration
- Test Equipment Integration

Device Population Management

- Sample Management
- Group Management
- Regulatory/Commission Reporting



Manage assets off-line with integrated PDA-based applications

Aclara Software's AMI Device Management solution is tightly integrated with Aclara's MDMS, the best-of-breed Meter Data Management System, to provide an end-to-end solution for Meter Asset AND Meter Data Management

Possible examples include:

- A mismatch between drive rates of a meter and an associated AMR module at gas metering sites.
- Improper computation of billing constants based on transformer ratios for commercial and industrial rated electric metering sites.

Other systems such as CIS and MDMS also rely on accurate metering device configuration data to perform their functions.

Aclara Software's AMI Device Management solution helps you maintain device configuration integrity by providing the means to validate configuration changes against specific characteristics and capabilities of a device. This includes validating the configuration of a meter against that of an associated device or site to ensure that usage is being recorded as expected. This is especially important during an AMI rollout where there is a lot of room for metering errors due to the volume of site installations being undertaken.

4 Efficient management of Regulatory In-Service Performance programs

The accuracy of a meter and its in-service performance are critical to the revenue of a utility. State regulations and ANSI standards require utilities to periodically check the accuracy of metering devices and implement programs to remove poor performing meters and allow better performing meters to stay in service longer. The ability to manage the operational health of in-service metering devices, while minimizing the cost of monitoring their status, is crucial in today's market. Aclara's AMI Device Management solution helps you improve the quality and collection of performance data for in-service meter populations. This helps you monitor performance trends and make informed decisions on new meter purchasing as well as formulate remediation programs to reduce the cost of testing and reporting on your overall meter population.

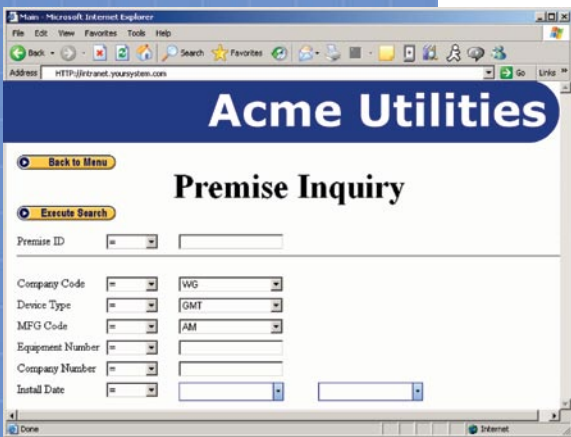
A Proven, Effective, and Robust Architecture...

The latest release of Aclara's AMI Device Management solution combines proven business processes and a powerful new architecture designed to provide true enterprise-level functionality. Aclara's AMI Device Management solution:

- Is built on a world-class technology platform that enables faster development of web applications and simplifies integration with other systems.
- Utilizes Web Services for enterprise integration, allowing organizations to take advantage of Service Oriented Architecture (SOA) to deploy solutions that are cost-effective and reusable.
- Employs N-tier design to provide flexibility and performance improvements while supporting scalability and extensibility.
- Features an enhanced role-based security model where user permissions are more granular and straightforward to manage.

Take Control of Your Assets Today

Aclara's AMI Device Management product is the only solution that addresses a utility's meter-related device management needs on an enterprise level, supporting the entire organization from the meter shop floor to the executive suite. And now, as part of Aclara Software, AMI Device Management solution is designed to readily integrate with other systems, including seamless integration with Aclara's Meter Data Management (MDM) and AMI solutions.



Access data remotely with web-based inquiry functions