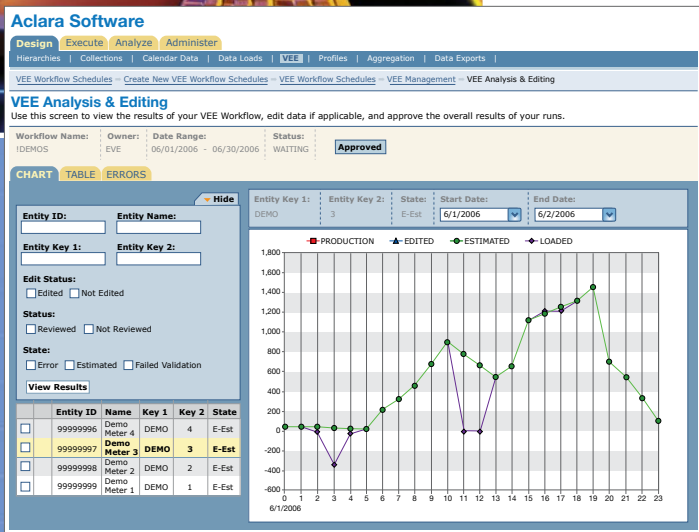


Will Your Data Management System Enable Your Vision of the 21st Century Utility?

Aclara Software's MDMS meets the challenge in delivering performance and benefits.

Meter Data Management (MDM) software must securely support the meter-to-cash process of an Advanced Metering Infrastructure (AMI), however, the potential of AMI with MDM goes much further. This combination can *dramatically improve distribution system management while lowering the cost and enhancing the quality of customer service*. These benefits result from leveraging the vastly enhanced quantity and quality of information available, including interval meter data and synchronized customer, weather, billing, and asset data.

An MDMS, therefore, needs to be *optimized for both robust performance and for results*. Only a system designed from the ground up to support 21st century utility business processes can achieve all transformational opportunities that can be derived from data. This design must include a robust and scalable data repository, effective data cleansing capabilities and seamless synchronization with the CIS, including the ability to generate billing determinants from AMI data. Moreover, it should also offer effective support for such functions as revenue protection, forecasting, load research, settlement, customer services, demand response, distribution planning, and operations, while allowing easy integration with other enterprise applications such as OMS.



Aclara Software's MDMS

"We were very impressed with Aclara's vision of what a meter data management system can deliver, as well as its innovative approach to product design."

An Aclara Software MDMS client

Aclara Software (formerly Nexus Energy Software) delivers solutions that unlock the power of this data. Aclara's MDMS has revolutionized the meter data paradigm, providing not only a proven-at-scale system infrastructure, but also tightly integrated and unique business applications that turn data into knowledge. This allows utilities to reap valuable business intelligence, achieve operational savings, and support critical customer service and resource efficiency objectives. These SOX compliant, architecturally flexible and robust applications can be configured to support current and future business needs.

A sampling of real world customer benefits from the deployment of Aclara's software solutions includes:

- A Western electric utility that was able to defer 46% of planned investment in distribution upgrades, resulting in 12% NPV
- A Northeastern power producer that was able to significantly reduce its load imbalance penalties through more accurate forecasting
- A large Midwestern combination utility that saw first call resolution increase 25%
- A Western combination utility, where 34% of customers surveyed reported that they would no longer need to call because of robust on-line presentation of information

The complete Aclara MDMS solution supports the largest current AMI deployment in North America, supporting more than 1.4M hourly meters.

Aclara Software's MDMS

A Proven, Effective, and Robust MDM Architecture...

Aclara MDMS has evolved over several years, based on experience gained from support of critical business processes. As a result, the technical architecture, data model, and analytic engines have been progressively updated to enable effective sharing of useful information, not just storage of data. Aclara's MDMS:

- Seamlessly integrates and synchronizes multiple data types, including customer information, network data, system level metering, and weather information to continuously update meaningful results
- Provides a robust underlying infrastructure that takes advantage of best practices in database design. This includes star schema for time series data, relational design for other data, generic entities/attributes for totally flexible data definition, and a storage architecture that dramatically reduces storage requirements and increases performance
- Features an enhanced validation, estimation and editing (VEE) layer that reinforces standard validation and estimation routines with well-tested profiling techniques and a powerful custom logic builder to ensure the highest quality of data
- Leverages a Service Oriented Architecture and a powerful workflow engine to easily integrate with other applications and serve as the broker between the AMI systems and the rest of the enterprise.
- Delivers a set of tightly integrated applications that leverage the data and analytic engines to drive business benefit.

It is this combination of a scalable, performance-driven data repository and a powerful set of integrated analytic applications that leverage the data that enables an MDM implementation to deliver a true return on investment.

...that Supports *Your Objectives* for Innovation in Business Processes

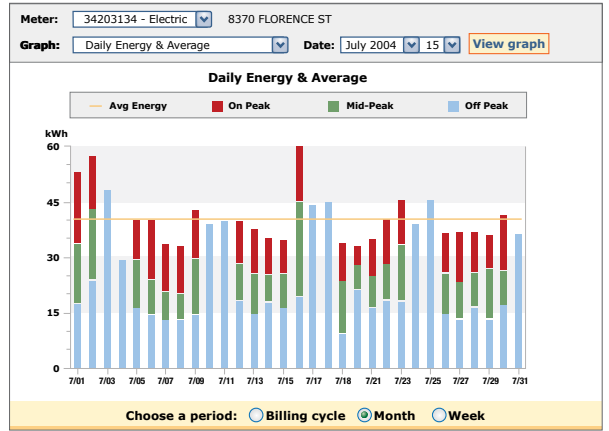
Highly configurable Aclara MDM applications support your goals to enhance and manage your distribution and retail operations.

- 1 **Load Forecasting & Settlement** – Proven, market-leading solution for load research, load profiling, aggregation, forecasting, and settlement
- 2 **Complex Billing** – Complete complex billing solution that greatly simplifies the process of creating and supporting complex rates and calculating billing determinants for your CIS
- 3 **Distribution Asset Analysis** – Accurate estimation and forecasting of hourly loads at any point on the network, providing tangible capital savings and failure prevention
- 4 **Revenue Assurance** – A powerful analytic tool that mines large quantities of meter information to identify suspicious accounts or meters that require further investigation
- 5 **Customer Care** – Leader in providing web self-service and call center-based support for inquiries, integrating bill and load presentation with unique analytics, and proven to *dramatically reduce customer service costs and increase customer satisfaction*
- 6 **Resource Management** – Delivering enhanced customer information and analysis demonstrated to support resource efficiency objectives and help customers understand and effectively respond to demand-response programs such as critical peak rates

Energy Usage Trends and Analysis

Check out your metered data and load analysis tips below. To change Meter, Graph, or Data, make your selection and click "View Graph" to see the results.

Save with the Time-of-Use Rate
You could save approximately \$34 this summer by switching to the new Time of Use rate and making relatively small adjustments to your energy use during "Peak" hours.



Aclara Software: Capturing data. Liberating knowledge.

Aclara Software (AclaraSoft.com), formerly Nexus Energy Software, is a part of the Aclara family of ESCO Technology Companies. The Aclara brand represents the industry's leading end-to-end meter data capture, transfer, processing, management and presentation solutions, including fixed-network AMI/AMR technologies (TWACS® Technology and STAR® Network) and MDM software (Aclara Software™ Solutions), serving water, gas, and electric utilities worldwide. Aclara Software provides energy companies with software solutions that add value to the existing billing and metering infrastructure to allow both the company and its customers to better manage energy-driven transactions and decision-making. Aclara Software's applications are used by more than 100 major energy organizations worldwide to reduce capital and operating costs and resource requirements as well as increase customer satisfaction. Further information on Aclara Software is available at AclaraSoft.com.